

Santa Barbara Fire History

1964
Coyote



67,000 acres
100+ homes

1977
Sycamore



805 acres
234 homes

1990
Painted Cave



4,900 acres
524 homes

2008
Tea



1,940 acres
238 homes

2009
Jesusita



8,733
80 homes

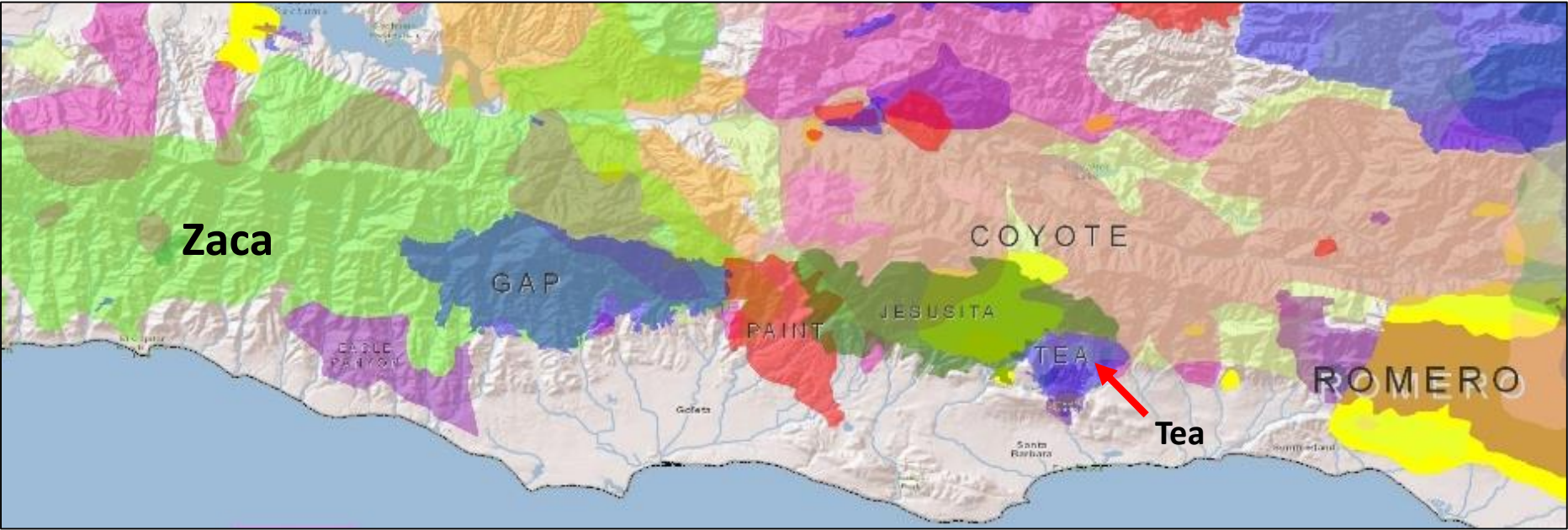
2017
Thomas



281,893 acres
1,063 homes

Santa Barbara County Fire History

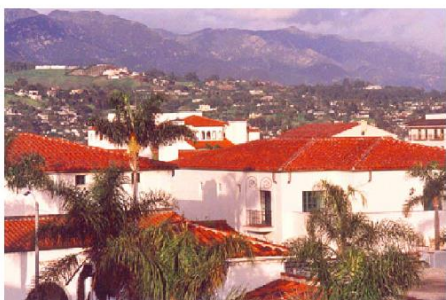
Year	Fire Name	Acres	Homes Lost
1964	Coyote	67,000	100+
1971	Romero	14,538	4
1977	Sycamore	805	234
1977	Hondo	10,000	0
1979	Eagle	4,530	5
1990	Painted Cave	4,900	524
1993	Marre	43,864	0
2002	Sudden	7,160	0
2004	Gaviota	7,440	1
2007	Zaca	240,207	0
2008	Gap	9,445	0
2008	Tea	1,940	238
2009	Jesusita	8733	80
2016	Sherpa	7,474	0
2016	Rey	32,606	0
2016	Canyon	12,518	0
2017	Thomas	281,893	1,063
2019	Cave	3,126	0



2004 City of Santa Barbara Wildland Fire Plan

*City of Santa Barbara
Fire Department*

Wildland Fire Plan



Prepared by: City of Santa Barbara
Fire Department
January 21, 2004

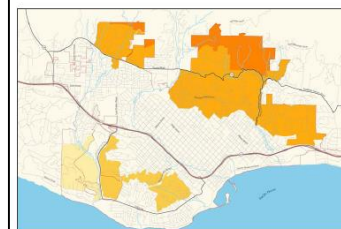
- Established local High Fire Hazard Areas
- Outlined and prioritized fuel reduction areas
 - Vegetation Management Units
- Identified need for better clearance on major evacuation routes
- Defensible Space improvements needed

Currently renewing and renaming to CWPP

Final
PROGRAM
ENVIRONMENTAL IMPACT REPORT
WILDLAND FIRE PLAN
February 2004



City of Santa Barbara -
Community Development Department
& Fire Department



State Clearinghouse
No. 2003041053

How do we pay for it?

- ◆ May 2006 – Ballot mailed to all property owners who would be asked to pay the proposed Wildland Fire Suppression Assessment District
- ◆ July 2006 – Santa Barbara City Council approved formation of Wildland Fire Suppression Assessment District to fund specific services to reduce the impacts associated with wildfire
- ◆ Duration: One year with an annual renewal process

City Clerk
City of Santa Barbara
P.O. Box 1990
Santa Barbara, CA 93101

OFFICIAL BALLOT
WILDLAND FIRE SUPPRESSION ASSESSMENT DISTRICT
BY THE CITY OF SANTA BARBARA FIRE DEPARTMENT

☐ **YES**, I approve the proposed assessment for the proposed Wildland Fire Suppression Assessment District.

☐ **NO**, I do not approve the proposed assessment for the proposed Wildland Fire Suppression Assessment District.

Signed _____ Date _____
Signature of Recorded Property Owner, or Authorized Representative

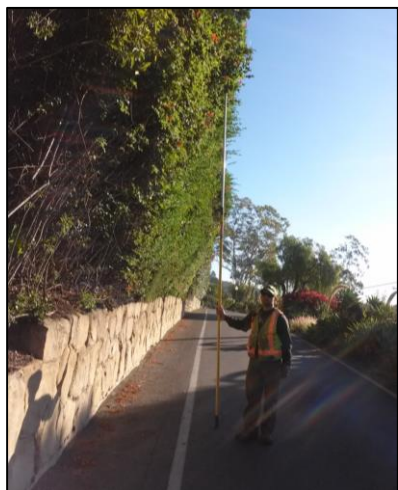
Print Name _____
I hereby declare, under penalty of perjury, that I am the property owner or owner's authorized representative of the parcel(s) identified on this official ballot.

See Other Side for Ballot Instructions

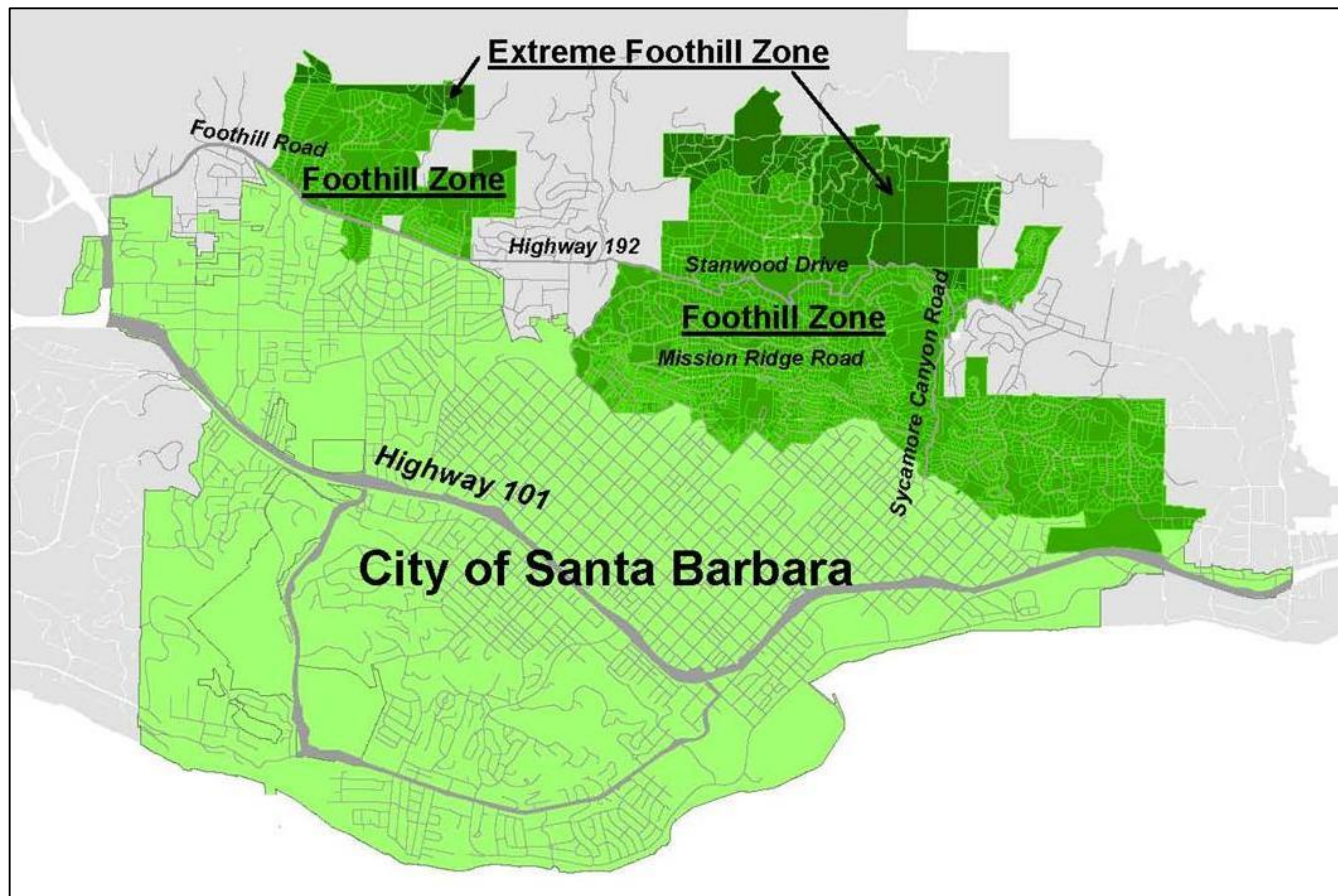
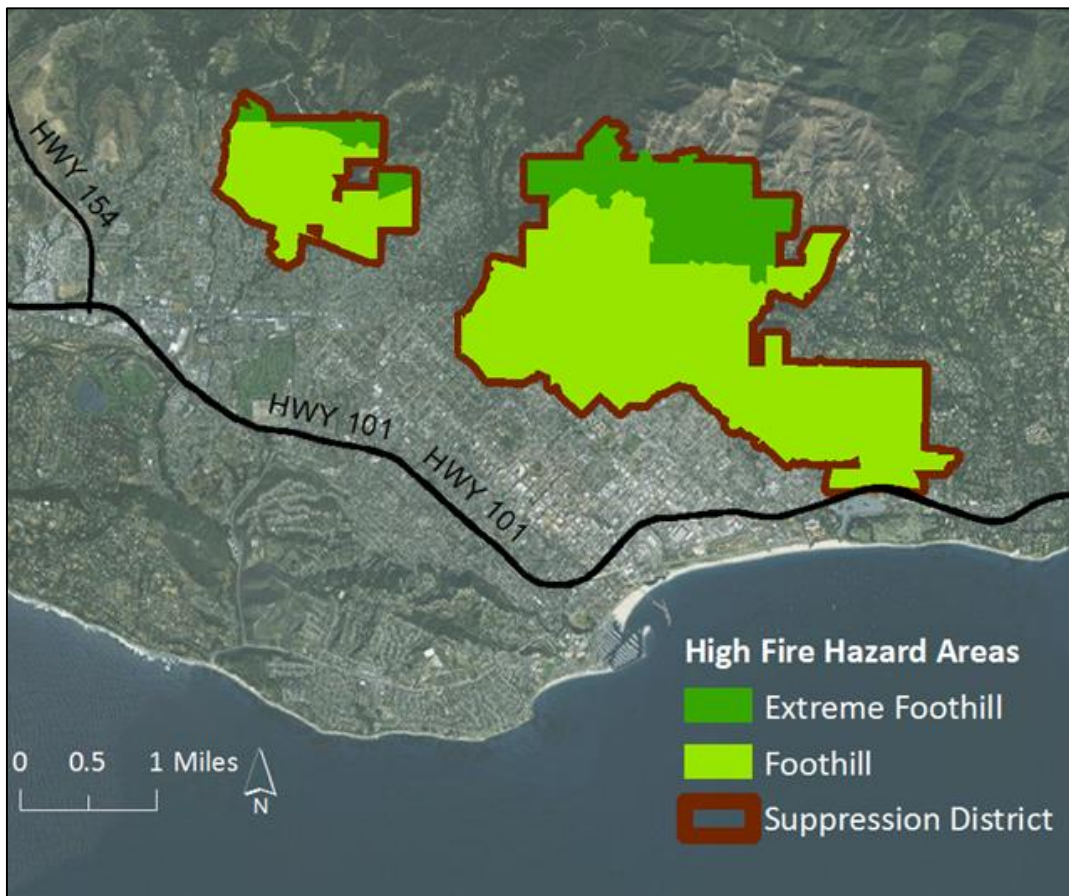
FOLD SO THAT YOUR NAME IS ON THE INSIDE OF THE FOLD BEFORE PLACING THIS BALLOT IN THE RETURN ENVELOPE

Services Provided

- Vegetation Road Clearance (Sept. – Jan.)
- Defensible Space Assistance
 - Voluntary Evaluations
 - Chipping Services (March-June)
- Vegetation Management
 - Community Fuels Treatment Network and Vegetation Management Units
- ✓ Identified and prioritized in City Wildland Fire Plan



Assessment District Area



Road Clearance



BEFORE



BEFORE



AFTER

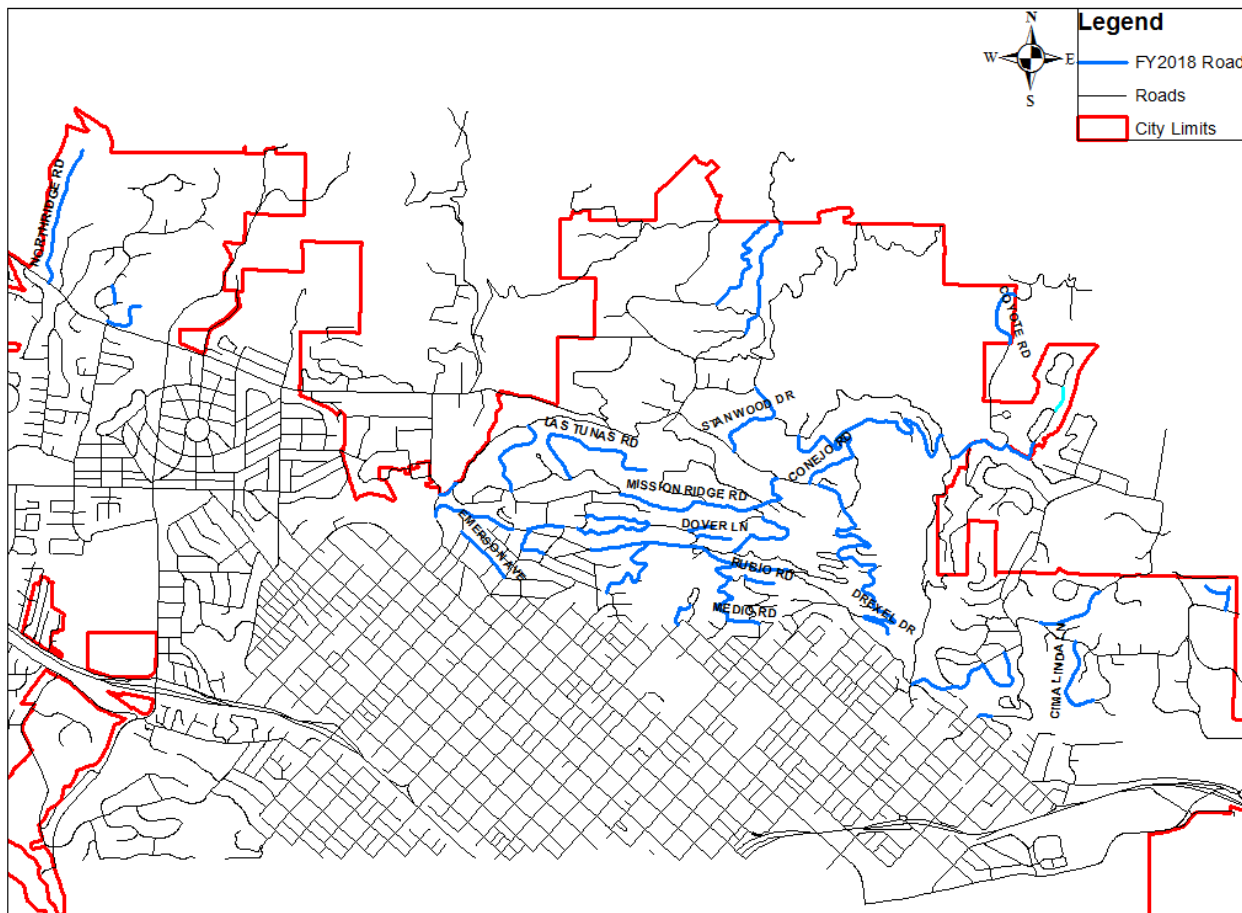


AFTER



Encroaching Hedges





14 Miles Treated Annually



Defensible Space Evaluations





Chipping Services

Encourages property owners to create defensible space

Provides a cost effective way to dispose of material

Approximately 300 tons of flammable vegetation removed annually

3500+ tons removed since 2008

100% of the chips recycled



Chipping available to all
Assessment District residents

Chipping Areas

The map displays the following chipping areas:

- San Roque Ontare (Blue)
- Las Canoas (Purple)
- West Mountain/Coyote (Yellow)
- Westmont Circle (Yellow)
- Sheffield/Parma (Light Purple)
- Las Tunas (Brown)
- Lower Riviera (Teal)
- Sycamore Cyn Las Alturas (Red)
- Eucalyptus Hill (Green)

Geographical features and roads labeled on the map include:

- Roads: JESUITA, SAN ROQUE, ONTARE, SAN ROQUE, ALAMAR, CONSTANCE, LOS OLIVOS, GIBRALTAR, COYOTE, BARKER PASS, ALSTON, CHANNEL, OFFRAMP, ONRAMP, MILPAS MONTECITO, MILPAS, ANAPAMU, GARDEN, CARILLO, STATE, HALEY.
- Canyons: MISSION CANYON, TUNNEL, LAS CANOAS.
- Other: FOOTHILL, BARBER PASS.

The photograph shows three workers in orange safety vests and hard hats operating a yellow chipping machine. The machine is processing brush and debris into mulch, which is being collected in a green container. The background shows a dirt road and dense vegetation.



Page 1

2019

Wildland Fire Response Awareness Briefing

Page 2

2019 DEFENSIBLE SPACE CHIPPING

San Diego/Puma	February 25
Las Canoas	March 11
Peninsular Hill	March 15
Sycamore Canyon at Altamira	April 18
Lower Riviera	April 22
San Roque/Ontario	April 26
Los Toreros	May 13
Corteo Westmonte	May 18
West Montecito/Lynx	June 3

Exotic pest plants that will NOT be chipped include:

Arundo - All species of grass
Cortaderia - Pampas
 All species of bamboo - for fire
Lonicera - weed
 Any type of palm - Tamarind
 Any kind of banana

Chipping services are provided to residential property owners to create defensible space and provide a cost effective way to dispose of the material.

As part of the City's environmental efforts, one yard is to be saved 95% of all chipped material. It is where that yard is saved your choice. If you use one chip or your property plans to be used as a golf course, a lot of chips is approximately 14 cubic yards. Pallets are not available.

The chipping contractors (CCPs) follow the specific requirements, however, the time that limit from materials will not be chipped and will be left on site. The property owner will be responsible for the final disposal of any material that cannot be chipped.

CHIPPING INSTRUCTIONS

- Car vegetation should be laid out in a pile along the street, inside the drivable roadway.
- The cut end of all vegetation must face the street so it can easily handle the material.
- Branch should be left in long lengths (4-7 feet). This makes it is easier to chop.
- Cut branches should be no greater than 10 inches in diameter.
- Material in plastic bags will not be picked up.
- Pallets or other items are not used to be vegetation.
- Rocks or other debris will not be chipped.
- Long piles of oak will not be chipped as they are not over 4 feet in length.
- Old metal vegetation that has been lying around the years will not be chipped (this type of vegetation damages chipping blades).
- Poor wood or other leaf litter cannot be chipped.
- Piles pushed or moved by mechanical means, i.e. tractor, will not be chipped.
- Grapes, palm fronds, succulents or agaves will not be chipped.

Please put your car vegetation on a driveway or another area that is not on the street. Limit the size of the pile. Chipping one pile is scheduled to begin (around 6am) but will not be done. www.sandagov.org for more information on the chipping service. For questions or to schedule a chipping service, call 619-459-4227.

Chipping Areas

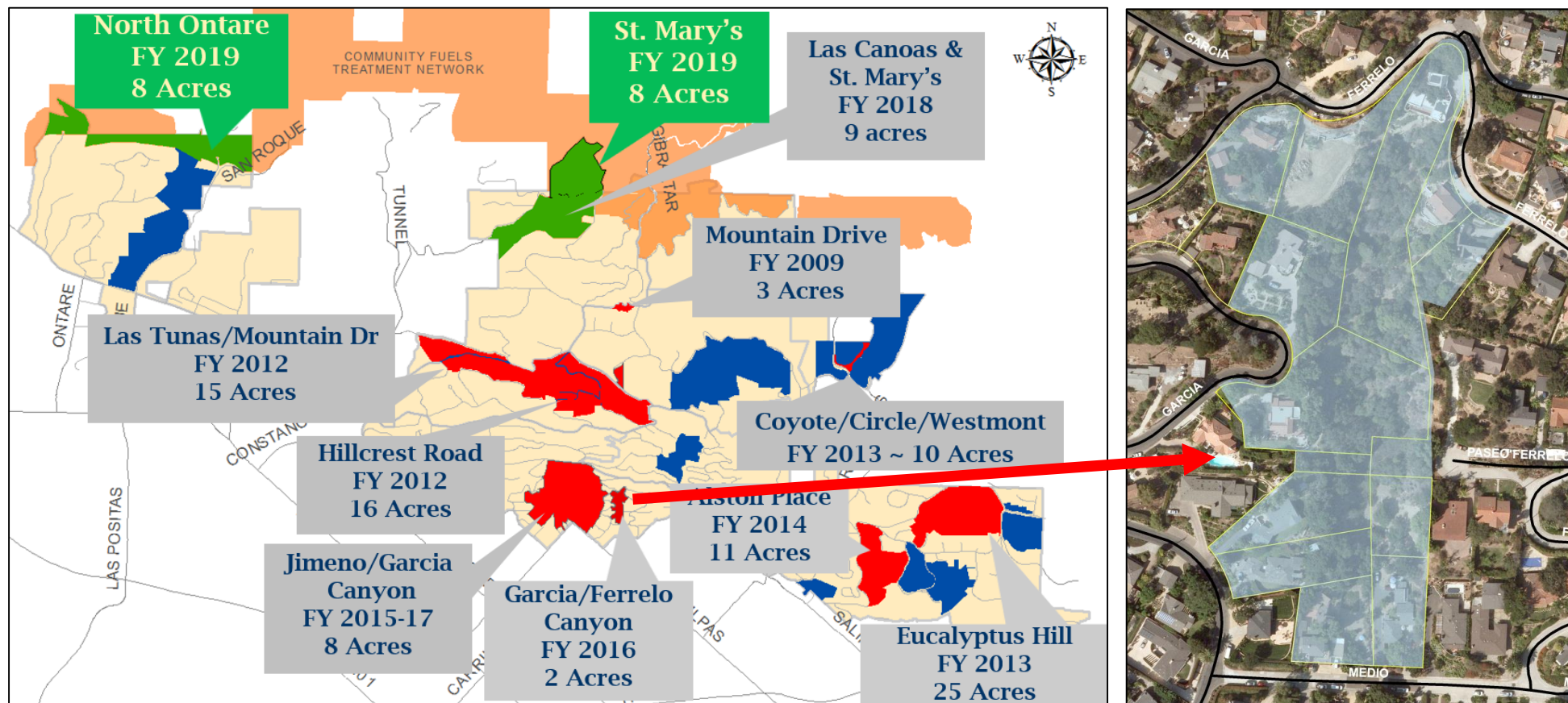
Vegetation Management



Challenges

- Biological Requirements
- Limited Access
- Remove Flammable Vegetation
- Remove Ladder Fuels
- Reduce Fuel Load 30-75%
- Remove Dead Vegetation
- Remove Exotic and Invasive Plant Species
- Protect natural resources, special status species (i.e. plants and animals)

Vegetation Management Areas





SPEAKER PRESENTATION

YESTERDAY, TOMORROW AND FINANCE
2020 CSMFO ANNUAL CONFERENCE
JANUARY 28-31, 2020
DISNEYLAND CA





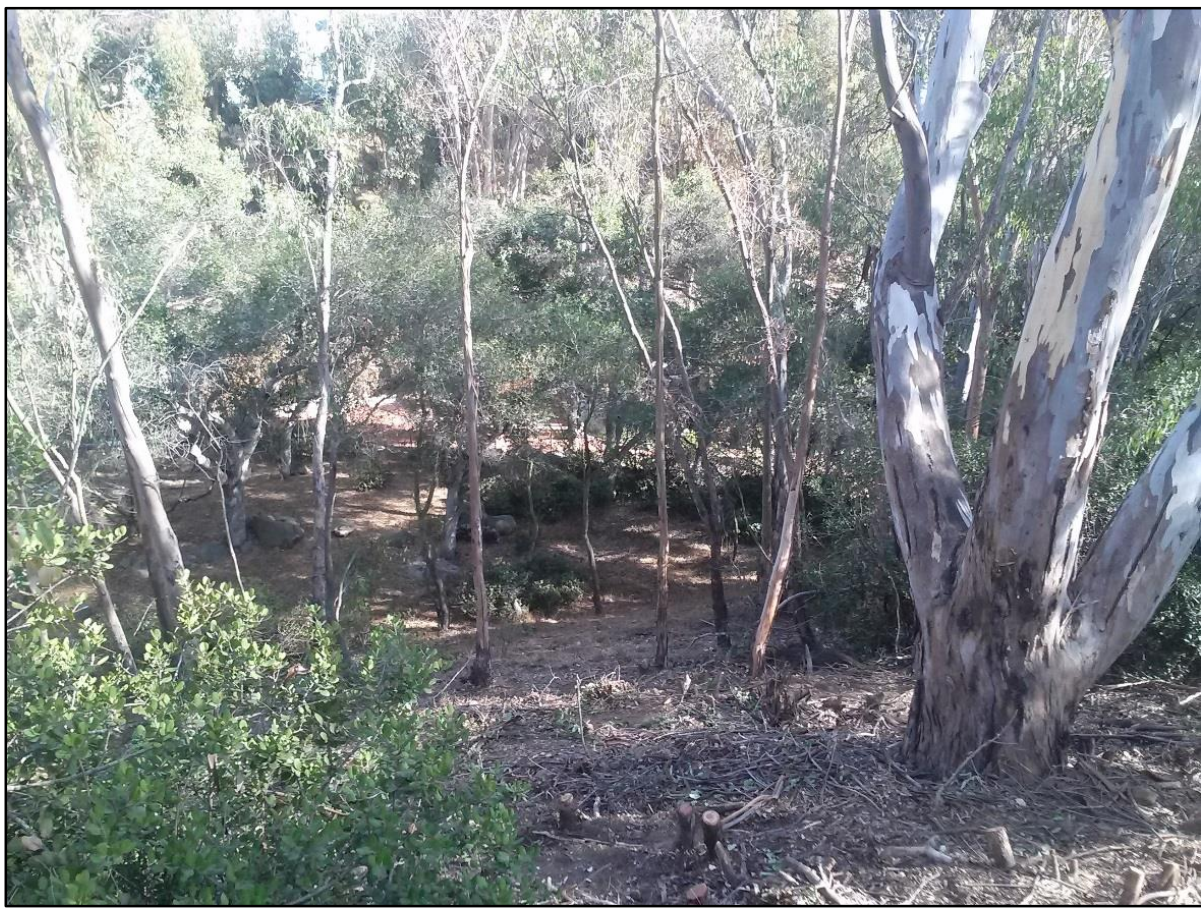
BEFORE



AFTER



BEFORE



AFTER



Annual Renewal

An Engineer's Report is required in the adopting resolution

Consumer Price Index determines annual rate increase; not to exceed 4%.

Rate for 2019-2020:

- \$84.86 per single family parcel-Foothill Zone
- \$105.23 per single family parcel-Extreme Foothill Zone



CITY OF SANTA BARBARA
WILDLAND FIRE SUPPRESSION ASSESSMENT
PRELIMINARY ENGINEER'S REPORT

MAY 2018

PURSUANT TO CALIFORNIA GOVERNMENT CODE SECTION 50078 ET SEQ., AND
ARTICLE XIII(D) OF THE CALIFORNIA CONSTITUTION

ENGINEER OF WORK:

SCI Consulting Group
4745 MANGELS BOULEVARD
FAIRFIELD, CALIFORNIA 94534
PHONE 707.430.4300
FAX 707.430.4319
WWW.SCI-CG.COM

Costs of Services

Services Costs	
Evacuation Roadway Clearing	\$98,000
Defensible Space & Chipping Program	\$80,000
Vegetation Management	\$90,433
Total for Installation, Maintenance and Servicing	\$268,433
Less: Contribution for General Benefits	(\$20,675)
Net Cots for Installation, Maintenance, and Servicing	\$247,758
Incidental Costs:	
Administration and Project Management	\$6,150
Allowance for County Collection	\$3,498
Subtotal – Incidentals	\$9,645
Wildland Fire Suppression Assessment District Budget	\$257,403
Assessment District Budget Allocation to Parcels	
Total Wildland Fire Suppression Assessment District Budget	\$257,403
Single Family Equivalent Benefit Units in District	3,308
Assessment per Single Family Equivalent Unit (SFE)	\$77.82

SALARY AND BENEFITS	40%	113,493
ALLOCATIONS	14%	39,189
PROJECT COSTS	46%	129,512
	100%	282,194

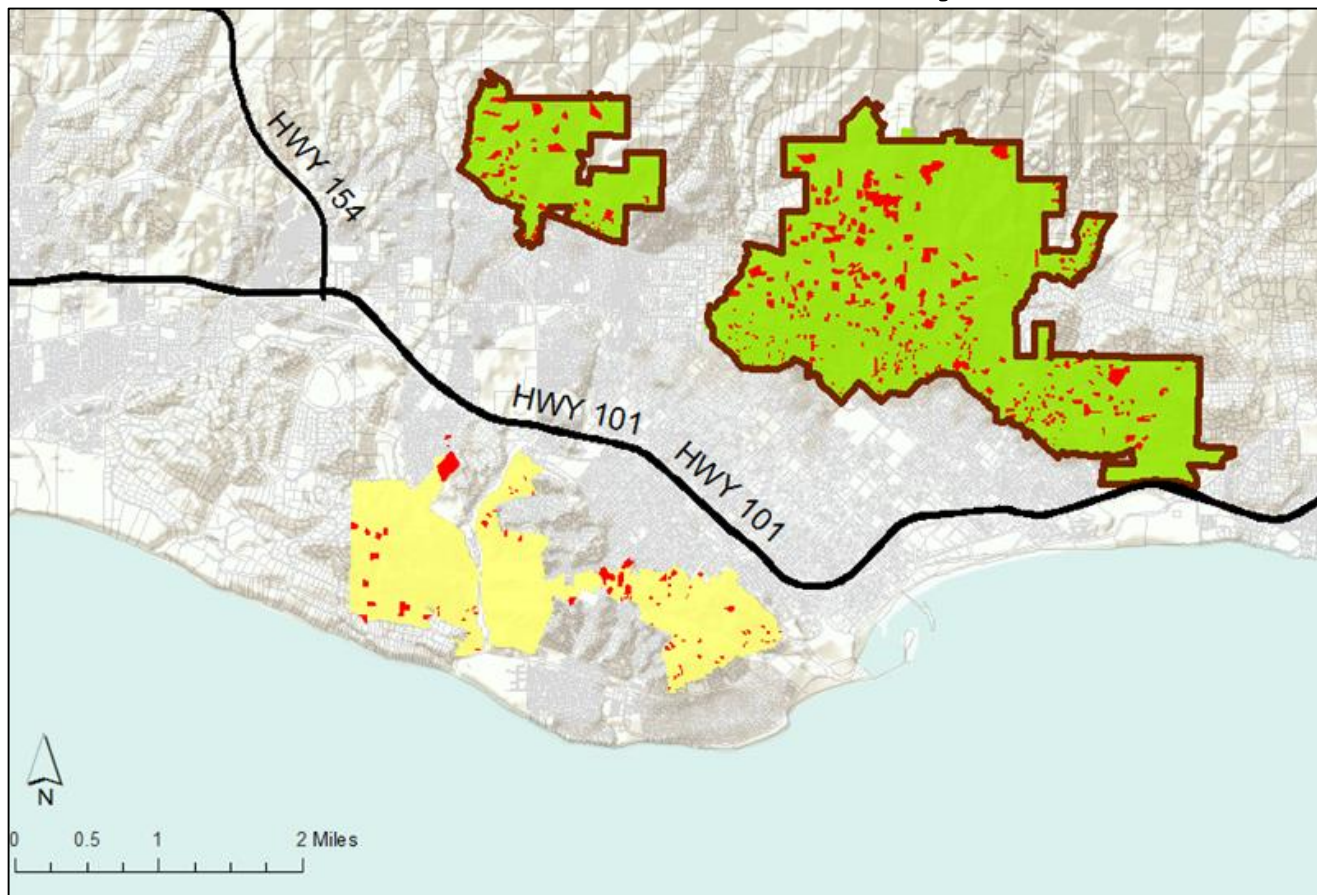
2016 UCSB Bren School Study

Research Questions:

1. How much do residents approve of and use the services?
2. How effective are the vegetation management strategies at reducing fire risk?
3. What other cities in California would benefit from a similar fire management district?



Survey Distribution



Sent

- 16 questions
- 3,323 – Foothill High Fire Zone
- 852 – Coastal High Fire Zone

Returned

- Foothill: 480 (14%)
- Coastal: 92 (10%)

Resounding Approval

80% currently approve of the district!

72% agree it creates a safer community!

Perceived VS Actual Risk

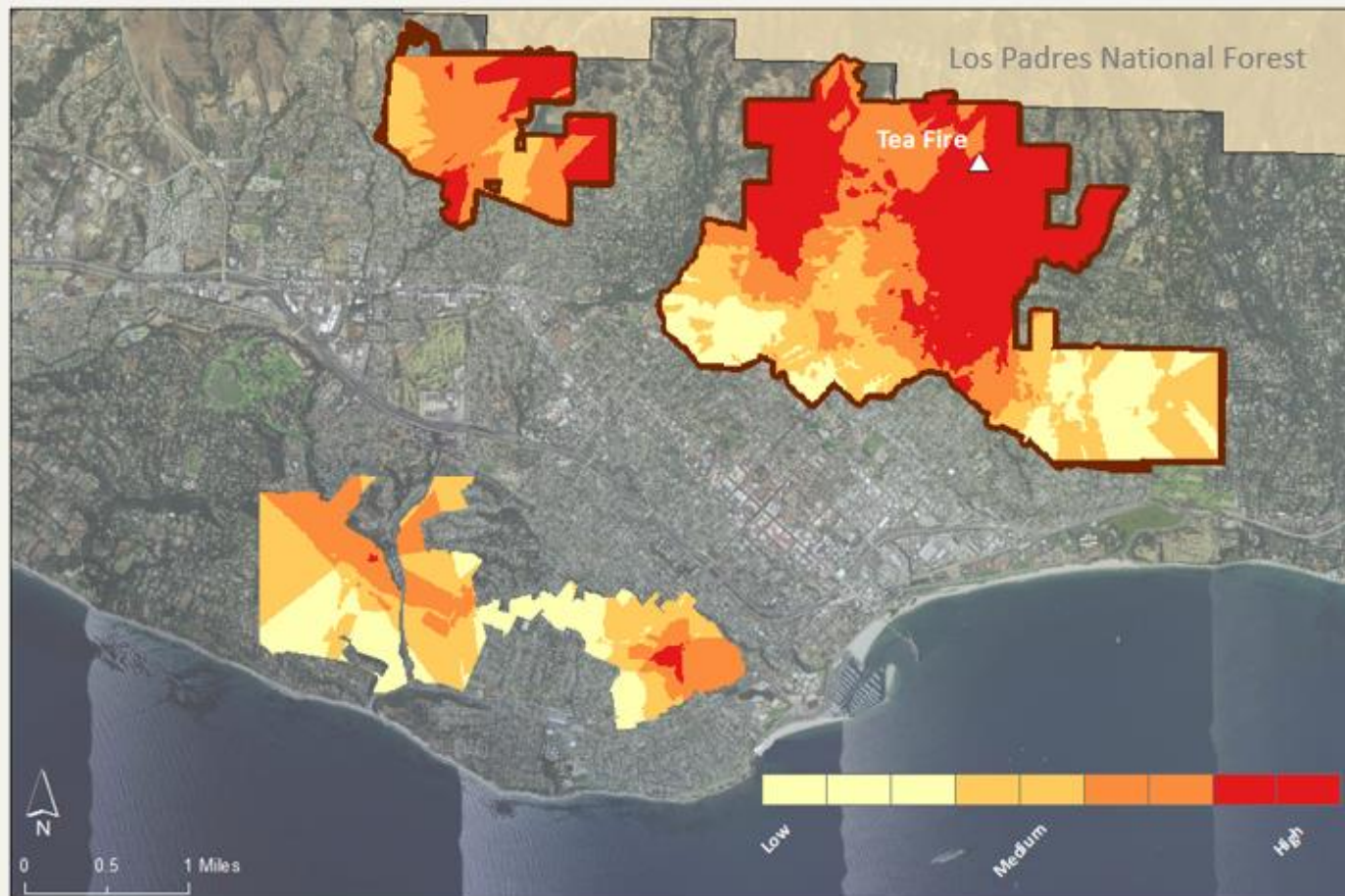
District

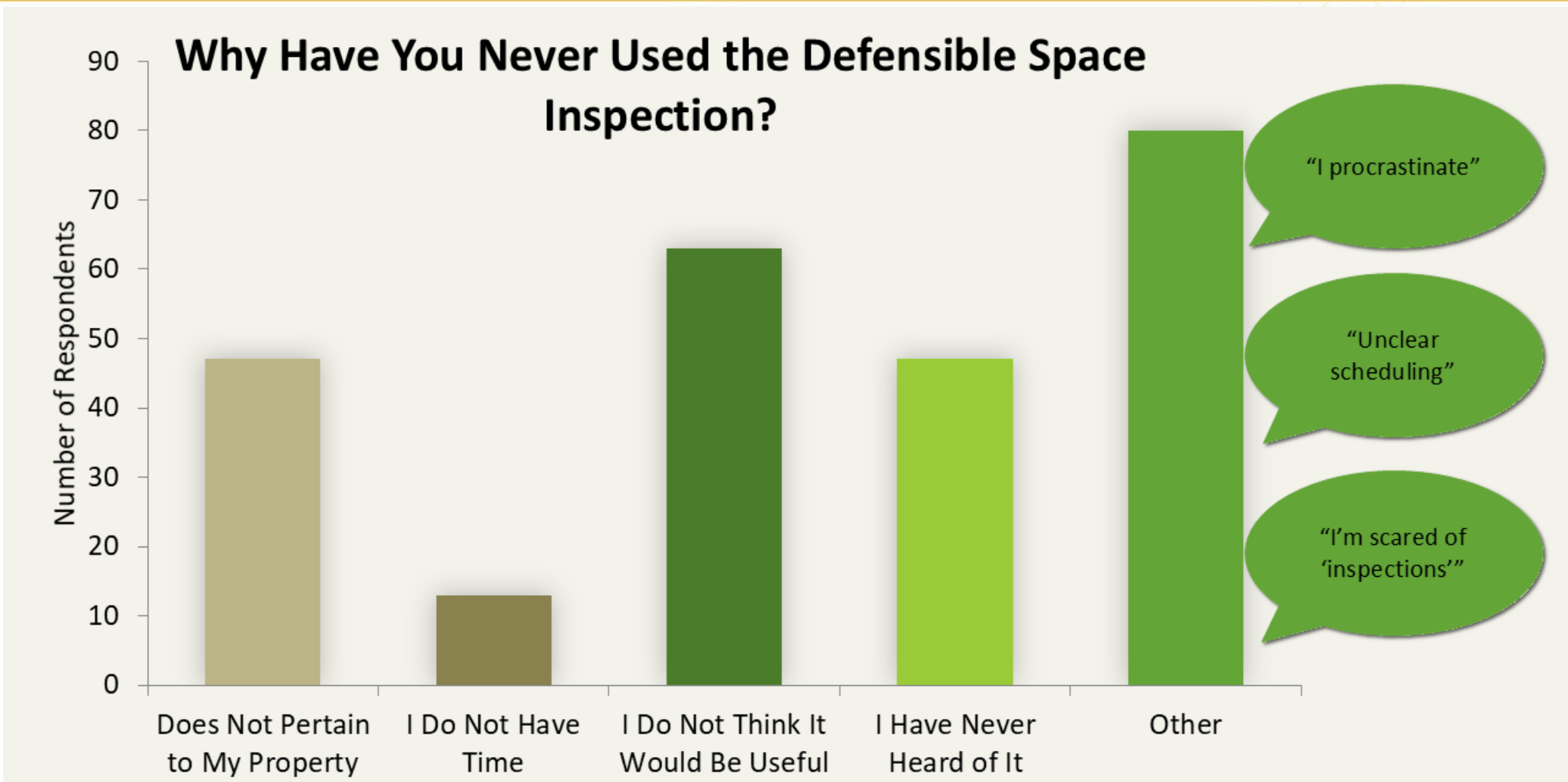


Coastal

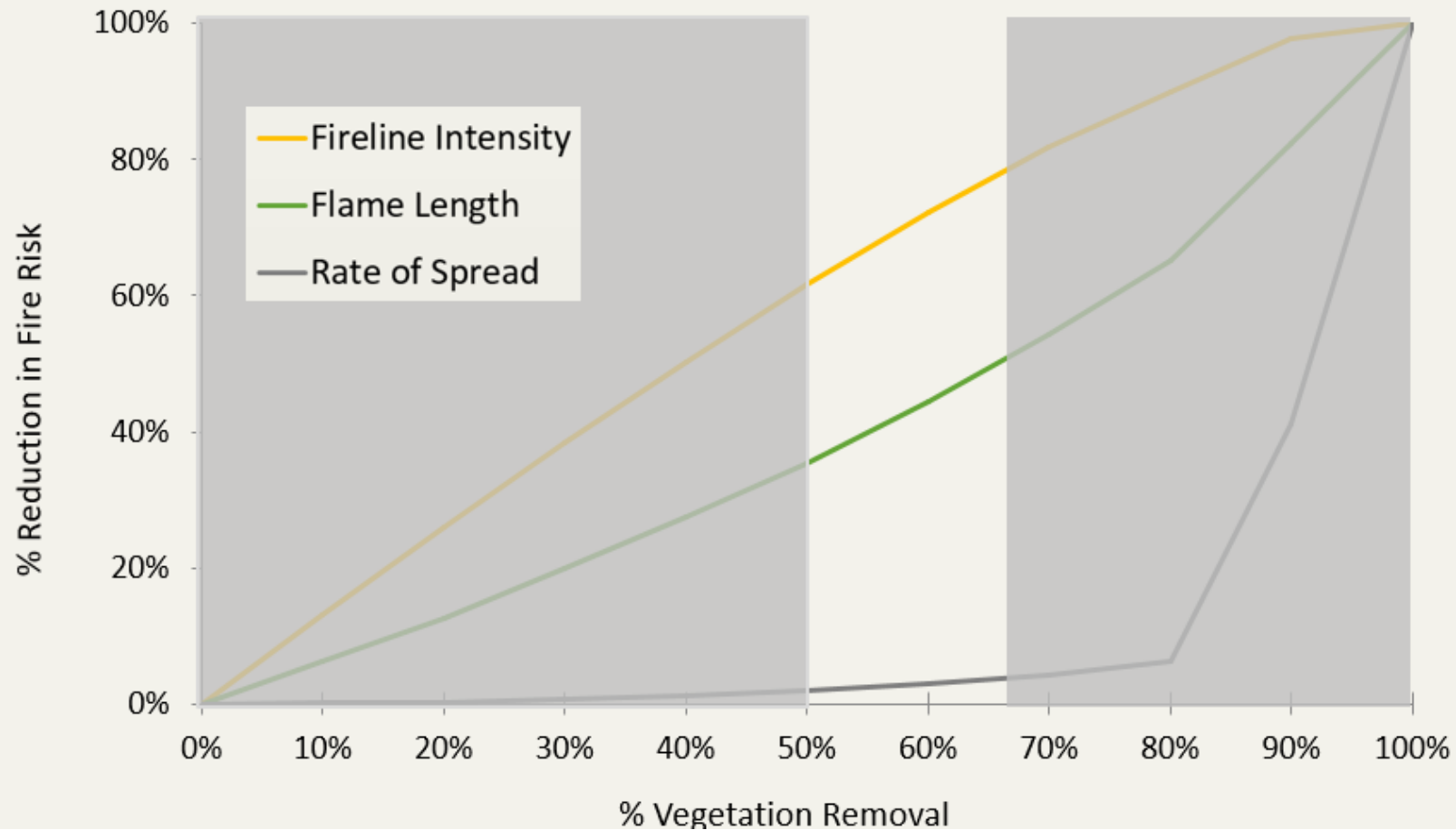


Percentage of Respondents












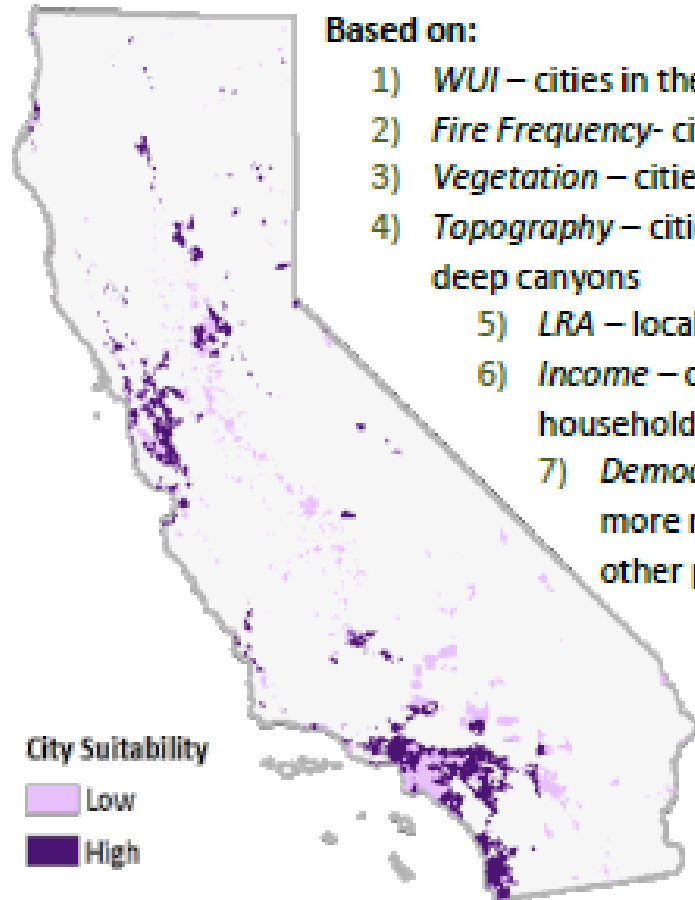
Relationship Between Fire Risk Reduction and Vegetation Removal



Key Recommendations

		Improve strategic communication
		Change “Inspections”
		Focus funds and efforts on 2/3 reduction sites
		Target vegetation management within Community Fuels Treatment Network

Other Suitable Cities



Based on:

- 1) *WUI* – cities in the wildland urban interface
- 2) *Fire Frequency*- cities with high wildfire events
- 3) *Vegetation* – cities with flammable vegetation
- 4) *Topography* – cities with steep slopes and deep canyons
- 5) *LRA* – local responsibility areas selected
- 6) *Income* – cities with >\$60,000 average household income
- 7) *Democratic leaning* – cities with more registered Democrats than other parties

American Canyon	Napa	Fairfield	San Jose
Anaheim	Novato	Fontana	San Luis Obispo
Antioch	Oakland	Fremont	San Rafael
Azusa	Pacifica	Gilroy	Santa Barbara
Brentwood	Palm Springs	Hayward	Santa Cruz
Brisbane	Palmdale	Healdsburg	Santa Rosa
Calistoga	Pasadena	Hercules	Saratoga
Chico	Perris	Jurupa Valley	Seaside
Chino	Petaluma	Lakeport	Sierra Madre
Chula Vista	Pittsburg	Lompoc	Sonoma
Claremont	Pleasanton	Los Angeles	South San Francisco
Cloverdale	Rancho Cordova	Los Gatos	St. Helena
Colton	Rialto	Mammoth Lakes	Tracy
Concord	Richmond	Marina	Truckee
Crescent City	Riverside	Martinez	Union City
Cupertino	Sacramento	Mill Valley	Vacaville
Diamond Bar	San Bernardino	Milpitas	Vallejo
Eastvale	San Diego	Monrovia	Walnut
El Cerrito	San Francisco	Monterey	Walnut Creek
		Moreno Valley	Whittier
		Morgan Hill	Windsor
		Morro Bay	Woodside